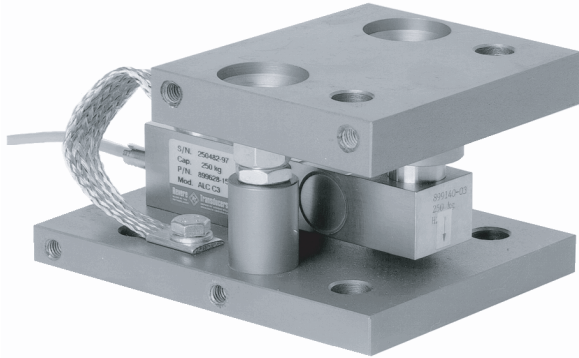


## ALC/ACB Self Aligning Mount



### FEATURES

- Capacities: 250 - 2000kg
- Hardened components at all bearing surfaces
- Rocker pin load introduction
- Mechanical protection of the critical load introduction area
- Built in horizontal movement control and lift-off protection
- Load cell (re)placement after installation of the mount

### OPTIONAL FEATURES

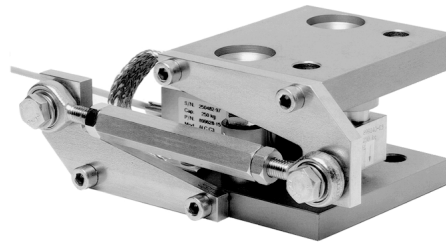
- Stainless steel or Nickel plated steel versions available
- Optional stay rod assembly
- Can be used also for ACB 0.5 - 2ton

### DESCRIPTION

The ALC/ACB self aligning silo mount, combined with the ALC/ACB load cell family, provides an ideal solution for process control, batch weighing, silo/hoppers and belt scale applications.

The ALC/ACB mount permits controlled movement in all directions. The design allows the cell to be fitted after installation of the mount.

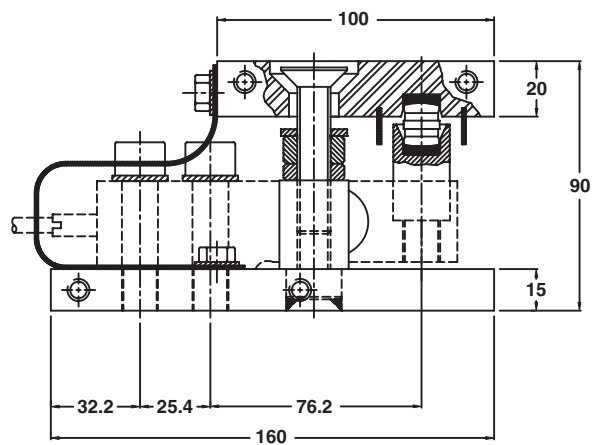
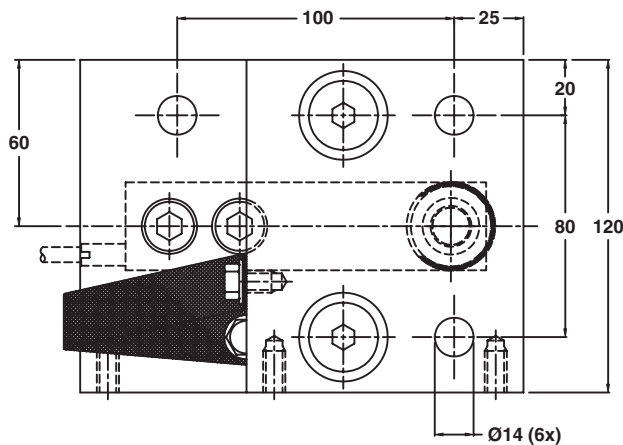
Unless major load movement is anticipated, the ALC/ACB mount eliminates the need for stay rods. An optional stay rod assembly, which can be bolted to the mount when required, is available.



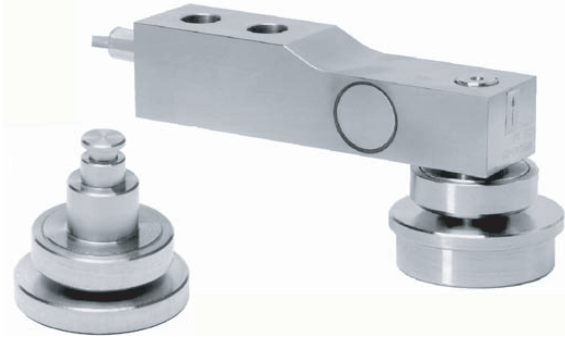
### APPLICATIONS

- Process control
- Batch weighing
- Silo/hopper weighing
- Belt scale weighing

### OUTLINE DIMENSIONS in millimeters



### ALC FOOT ASSEMBLIES



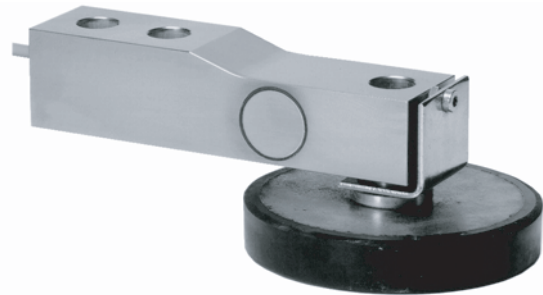
### FEATURES

- Capacities: 250 - 2000kg
- Hardened components at all bearing surfaces
- Self aligning, rocker pin load introduction
- Stainless steel construction, suitable for harsh environments

The ALC foot assemblies, together with the ALC load cell family, are an ideal solution for medium capacity belt, pallet and platform scales.

The stainless steel height adjustable and non-adjustable foot assemblies provide excellent load introduction to the load cell while maintaining an overall low profile. The rocker pin based design allows flexibility in platform design without compromising overall system performance.

The rubber foot assembly provides a high performance, shock absorbing, load introduction. The foot is made of yellow passivated st37 and uses hardened components at all bearing surfaces.



#### Further Information:

Mount / Foot	Height, ALC/ACB + assembly (mm)	Outline drawing	
		Stainless steel	Nickel plated
Height Adj. Foot	65+3/68+3 (2t)	899179	
Non Adj. Foot	55/58 (2t)	899182	
Rubber Foot	58/62 (2t)		499086
Self Aligning Mount	90	499085-10	499085-00
Stay Rod Assembly	90	499068-10	499068-00
Mount	Assembly guidelines		
Self Aligning Mount	AG 10/06-109/02		
Stay Rod Assembly	AG 10/06-200/02		

### VISHAY TRANSDUCERS (VT) SALES OFFICES

**VT Americas**  
City of Industry, CA  
PH: +1-626-858-8899  
FAX: +1-626-332-3418  
vt.us@vishaymg.com

**VT Netherlands**  
Breda  
PH: +31-76-548-0700  
FAX: +31-76-541-2854  
vt.nl@vishaymg.com

**VMG UK**  
Basingstoke  
PH: +44-125-646-2131  
FAX: +44-125-647-1441  
vt.uk@vishaymg.com

**VMG Israel**  
Netanya  
PH: +972-9-863-8888  
FAX: +972-9-863-8800  
vt.il@vishaymg.com

**VMG Germany**  
Heilbronn  
PH: +49-7131-3901-260  
FAX: +49-7131-3901-2666  
vt.de@vishaymg.com

**VT China**  
Tianjin  
PH: +86-22-2835-3503  
FAX: +86-22-2835-7261  
vt.prc@vishaymg.com

**VMG France**  
Chartres  
PH: +33-2-37-33-31-20  
FAX: +33-2-37-33-31-29  
vt.fr@vishaymg.com

**VT Taiwan\***  
Taipei  
PH: +886-2-2696-0168  
FAX: +886-2-2696-4965  
vt.roc@vishaymg.com  
\*Asia except China